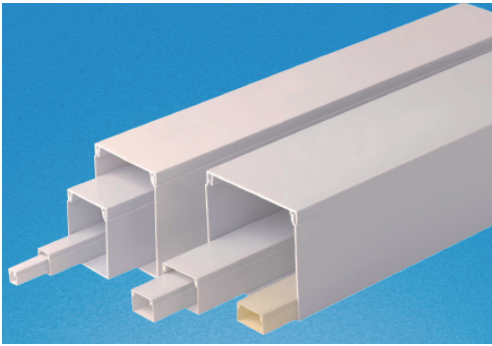


说明：本页为出口品为主，有起订量要求

RCCN 日成PZC电线槽 PZC Cable Trunking

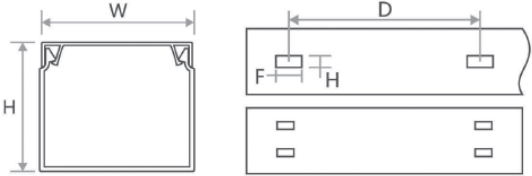
单位/Unit:mm



产品材质：全新料硬质PVC料制成。
 产品认证：欧洲CE、欧洲环保RoHS
 防火等级：FV-0级、FH-1。工作温度：静态-40°C至85°C。
 颜色：白色,调其颜色(有最少量订货要求)
 产品特性：1.反扣式槽盖与槽体设计组合后绝不脱落,
 且接合面平滑,不割伤手及擦损附近配线。
 2.配线槽65°C内不易断裂,变形,变色,装配省时便利。

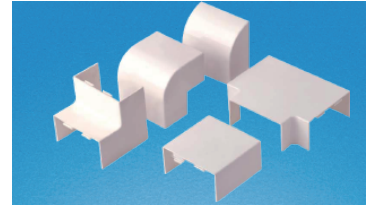
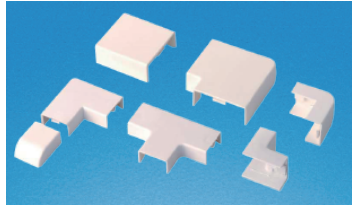
Made of PVC, 94V0
 Work temperature:-40 °c to 85 °c

2米或2.9米
 2M or 2.9M

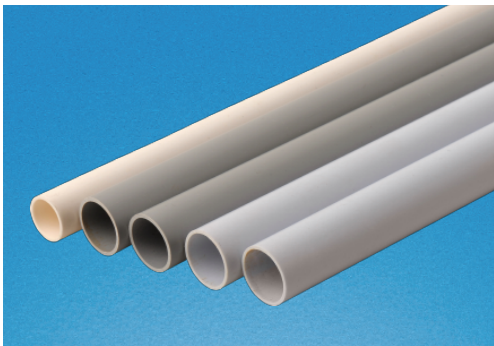


型号 Item No.	WxH	厚度 Thickness	型号 Item No.	WxH	厚度 Thickness
PZC-1010	10x10	0.6	PZC-5050	50x50	1.1/1.2/1.45
PZC-1212	12x12	0.59	PZC-6040	60x40	1.2/1.33/1.45
PZC-1407	14x7	0.55	PZC-6060	60x60	1.3/1.63
PZC-1510	15x10	0.5/0.75	PZC-7550	75x50	1.25/1.45
PZC-1616	16x16	0.58/0.63/0.85/0.9	PZC-7575	75x75	1.35/1.5
PZC-2010	20x10	0.5/0.64/0.7/0.75	PZC-8040	80x40	1.2/1.55
PZC-2212	22x12	0.45/0.55	PZC-8050	80x50	1.26/1.6/1.8
PZC-2414	24x14	0.7/0.83	PZC-8080	80x80	1.6
PZC-2516	25x16	0.63/0.75/0.9/1.2/1.5	PZC-10027	100x27	1.0/1.2
PZC-2525	25x25	0.8/1.0	PZC-10040	100x40	1.35/1.55
PZC-3015	30x15	0.68/0.76/0.9	PZC-10050	100x50	1.35/1.68
PZC-3816	40x16	0.63/1.0	PZC-10065	100x60	1.65
PZC-3818	38x17	0.68/0.8	PZC-10075	100x75	1.65
PZC-3919	39x19	0.8/1.0	PZC-100100	100x100	1.6/2.0
PZC-4025	40x25	0.68/0.8/1.0	PZC-12080	120x180	2
PZC-4040	40x40	1.1/1.3	PZC-150100	150x100	2
PZC-5025	50x25	0.8/0.97	PZC-200100	200x100	2.4

孔尺寸(FxH):8x4mm,可以做其他尺寸。
 Hole Size(FxH):8x4mm,Othe size ask for MOQ.



RCCN 日成FP电线管 FP Electrical Flared Pipe

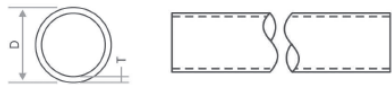


产品材质：全新料硬质PVC料制成。
 产品认证：欧洲CE、欧洲环保RoHS
 防火等级：FV-0级、FH-1。工作温度：静态-40°C至85°C。
 颜色：白色,调其颜色(有最少量订货要求)

2米或2.9米
 2M or 2.9M

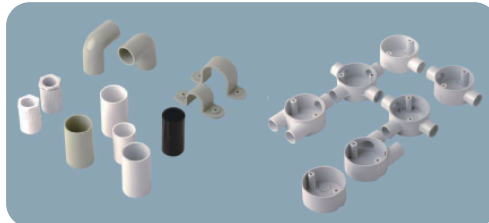
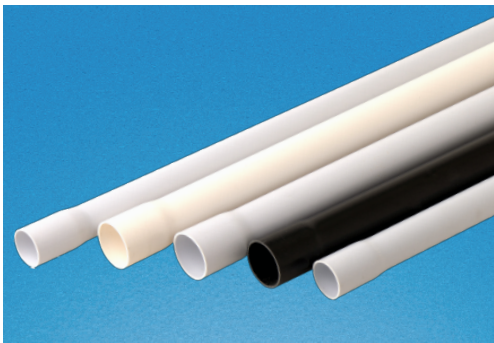
Made of PVC, 94V0
 Work temperature:-40 °c to 85 °c

单位/Unit:mm



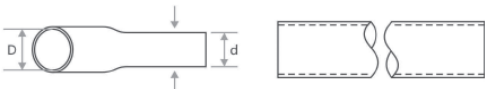
型号 Item No.	外径 Specification D	厚度 Thickness T	包装(条/扎) Packing(pca/bag)
FP-16W	Ø16	0.8/0.9/1.1/1.2	25
FP-20W	Ø20	1/1.1/1.2/1.3/1.45	25
FP-25W	Ø25	1.1/1.2/1.3/1.4/1.75	25
FP-32W	Ø32	1.25/1.5	10
FP-40W	Ø40	1/1.5	10
FP-50W	Ø50	1.1/1.5	5

RCCN 日成FPD扩口电线管 FPD Electrical Flared Pipe



2米或2.9米
 2M or 2.9M

单位/Unit:mm



型号 Item No.	d	D	厚度 Thickness T	包装(条/扎) Packing(pca/bag)
	细外径	宽口直径		
FPD-16W	Ø16	Ø18.6	0.8/0.9/1.1/1.2	30
FPD-20W	Ø20	Ø22.5	1/1.1/1.2/1.3/1.45	25
FPD-25W	Ø25	Ø27.5	1.1/1.2/1.3/1.4/1.75	25
FPD-32W	Ø32	Ø34.5	1.25/1.5	10

日成PVC难燃电线槽

PVC Cable Trunking